



# December Letter from Andersen Library

December 2, 2013

<http://library.uww.edu>

University of Wisconsin - Whitewater

## VPN v EZProxy for Off-Campus Access

If you have difficulty accessing the Library databases and journals from off-campus, you have several options.

If you've started at the Library web site, your access is via EZProxy. This is the most reliable way to access Library resources remotely. But if EZProxy doesn't give you access to what you need, use VPN to bypass the proxy server: <https://vpn.uww.edu>. Once you're in VPN, use the window within VPN to navigate to the Library web site and find what you need.

If you started with VPN and can't get access to a resource (from within the VPN window), *logout* of VPN. Then go to the Library web site: <http://library.uww.edu>, find the resource you need and login with your netID and password when prompted.

The Library's [troubleshooting guide](#) offers additional tips for accessing resources on the Library web site.

## LEAP ELOs and Library Instruction

Faculty sometimes lament that students do not use quality sources for their research papers and projects. Library instruction can help your students find peer-reviewed articles and other scholarly sources.

But library instruction isn't only about finding quality sources. Library instruction is a tool for helping to ground your students in the basics of information literacy, which is one of LEAP's Essential Learning Outcomes.



Call or email your [liaison librarian](#) or the [Reference Desk](#) to schedule your classes for a customized library instruction session in Winterim or Spring. Your librarian can also create a [course research guide](#) to accompany the instruction session.

## Holiday Shopping @ The Book Sale



The holiday season is here, so we've loaded the Book Sale kiosk with novels and giftable hardcover books. Prices range from \$1 to \$2.

Stop by the Book Sale kiosk at the Library entrance to do some shopping next time you're in the neighborhood.

## Exam and Holiday Hours

### Exam Hours: December 12—December 20

Mon-Thurs	7:00am—2:00am
Fri Dec 13	7:00am—10:00pm
Sat Dec 14	9:00am—10:00pm
Sun Dec 15	9:00 am—2:00am
Thurs Dec 19	7:00am—4:30pm
Fri Dec 20	8:00am—4:30pm

### Holiday Hours: December 21—January 1

Mon-Fri	8:00am—4:30pm
Sat-Sun	Closed
Dec 24-25	Closed
Dec 31	Closed
Jan 1	Closed



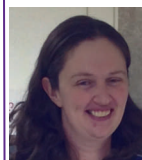
See <http://library.uww.edu/hours> for complete hours.

## Research@UWW Discovery Tool

One of the latest developments at the Library is the addition of [Research@UWW](#). This is a discovery tool that searches across multiple library databases, digital repositories, HALCAT and other UW library catalogs all at once. [Research@UWW](#) will replace *SuperSearch*, which will be canceled in January 2014.

Try out [Research@UWW](#) — and then fill out the 3 question [user survey](#) to tell us what you think.

## New Late Night Staff



Theresa Ford is the new Late Night Supervisor in Circulation. She comes to us from the WDNR Field Office in Horicon, WI.

Theresa has an undergraduate degree from UW-River Falls and a graduate degree from UW-Stevens Point.

## Reserve Your Reserves

If you have new reserve material for Winterim or Spring (print or online) or would like to reactivate reserves from a previous semester, please fill out the [reserves request form](#) or contact Trisha Klowak: 262.472.5512, [reserve@uww.edu](mailto:reserve@uww.edu).



Questions? Contact Carol Elsen, Collection Manager, x5751 [elsenc@uww.edu](mailto:elsenc@uww.edu)